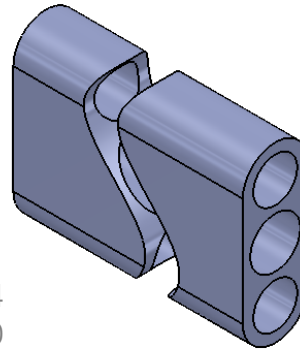
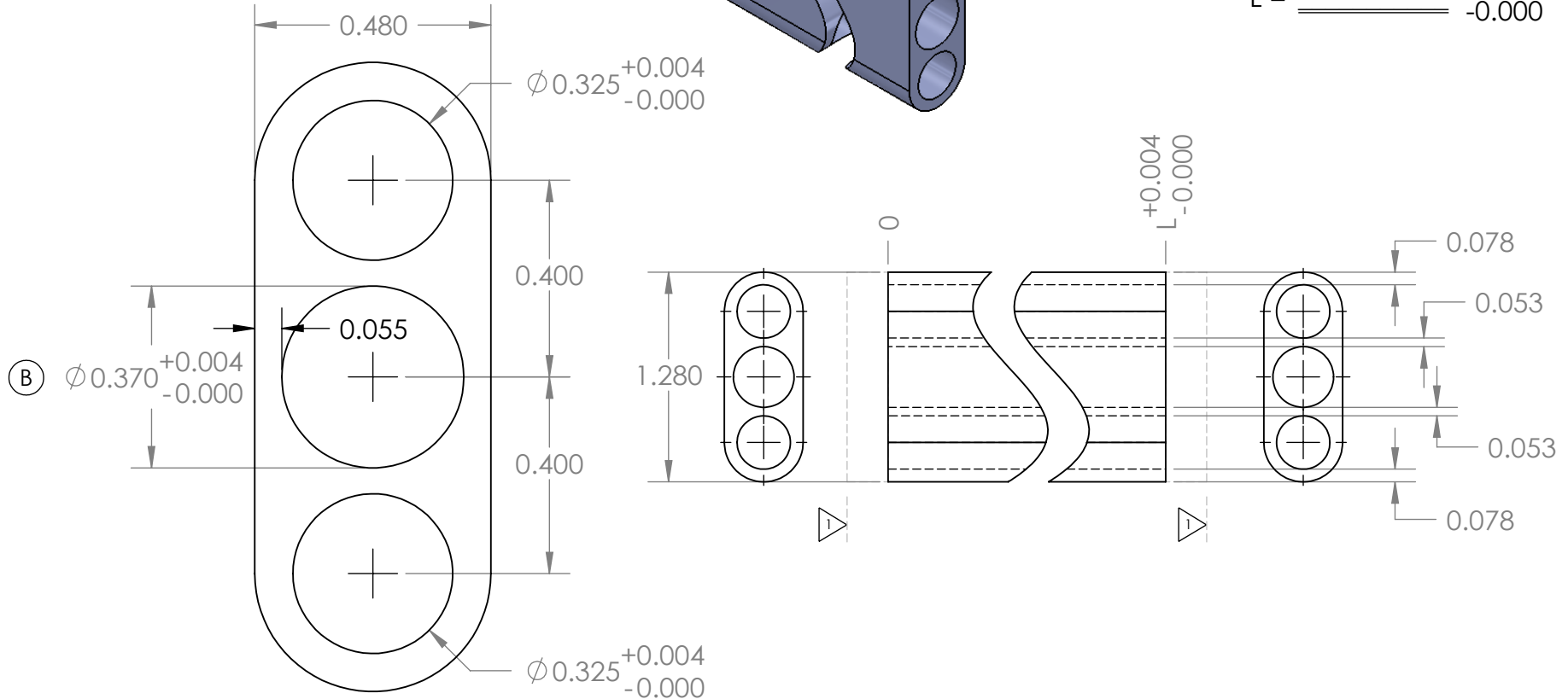


DASH NO.	GLASS	PART NUMBER
-KK	KK1	-EXAMPLE-
-S	KSF5	B A2513 - 332 - KK
-SS	KSF10	
-K	KF2	REV DRAWING NO. LENGTH MATERIAL
-C	KC331	
-Q	QUARTZ	NO SOAK, LIGHT FIRE POLISH ON ENDS

NO.	NOTES
1	▷ BLANK CUT LENGTH = L + 0.5".
2	L=LASER ROD LENGTH - 0.680" (USE 3.0" FOR 80 mm).
3	POLISH INSIDE AND OUT TO CLARITY, TO 80 - 50 SCRATCH - DIG.
4	ENDS-FINE GROUND & CHAMFER ON O.D. & I.D. 0.005" - 0.010".
5	STRENGTHEN - 3 DAY SOAK. (EXCEPT WHERE NOTED).



$$L = \text{_____} \begin{matrix} +0.004 \\ -0.000 \end{matrix}$$



SCALE 3:1

UNLESS OTHERWISE SPECIFIED:

DIMENSIONS ARE IN INCHES
(EXCEPT WHERE NOTED)
TOLERANCES:
ONE PLACE DECIMAL ±0.020
TWO PLACE DECIMAL ±0.010
THREE PLACE DECIMAL ±0.005

	NAME	DATE
DRAWN	CXY	19JAN10
CHECKED	CRH	19JAN10
ENG APPR.		
MFG APPR.		
Q.A.		

KIGRE, INC.

TITLE:

TUBE, FILTER - 400/3

REV	DATE	DESCRIPTION	BY	APPR
A	07JUL94	NOTE 1 ADDED.	GR	GR
B	4AUG94	D, 0.370 WAS 0.390	GR	GR
C	19JAN10	HOLE TOLERANCE CHANGED FROM ±0.005 TO -0.000 -- +0.004	CXY	CRH

INTERPRET GEOMETRIC TOLERANCING PER:

MATERIAL
SEE CHART

FINISH
SEE NOTES

DO NOT SCALE DRAWING

PROPRIETARY AND CONFIDENTIAL
THE INFORMATION CONTAINED IN THIS DRAWING IS THE SOLE PROPERTY OF KIGRE, INC.. ANY REPRODUCTION IN PART OR AS A WHOLE WITHOUT THE WRITTEN PERMISSION OF KIGRE, INC. IS PROHIBITED.

NEXT ASSY

USED ON

APPLICATION

COMMENTS:

SIZE	DWG. NO.	REV
A	A1544-____-____	C
SCALE: 1:1	WEIGHT:	SHEET 1 OF 1