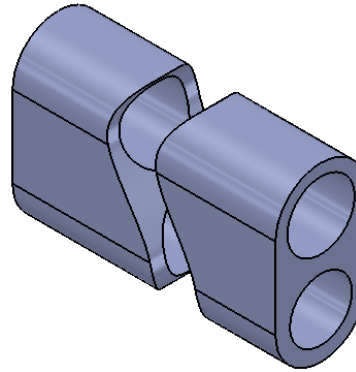
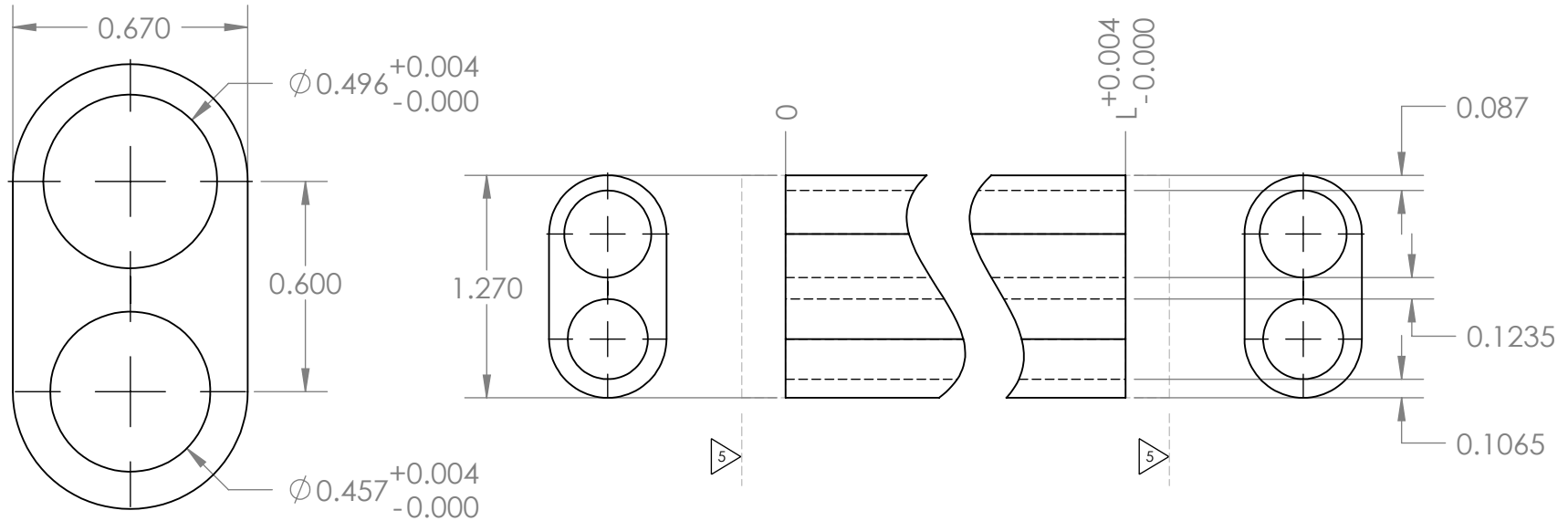


DASH NO.	GLASS	PART NUMBER
-KK	KK1	-EXAMPLE-
-S	KSF5	B A2513 - 332 - KK
-SS	KSF10	
-K	KF2	REV DRAWING NO. LENGTH MATERIAL
-C	KC331	
-Q	QUARTZ	NO SOAK, LIGHT FIRE POLISH ON ENDS.



NO.	NOTES
1	▶ BLANK CUT LENGTH = L + 0.5".
2	L = LASER ROD LENGTH - 0.680" (USE 3.0" FOR 80 mm).
3	POLISH INSIDE AND OUT TO CLARITY, TO 80 - 50 SCRATCH - DIG.
4	ENDS-FINE GROUND & CHAMFER ON O.D. & I.D. 0.005" - 0.010".
5	STRENGTHEN - 3 DAY SOAK. (EXCEPT WHERE NOTED).

$$L = \text{_____} \begin{matrix} +0.004 \\ -0.000 \end{matrix}$$



SCALE 2:1

UNLESS OTHERWISE SPECIFIED:		NAME	DATE
DIMENSIONS ARE IN INCHES (EXCEPT WHERE NOTED)		DRAWN	CXY 26JAN10
TOLERANCES:		CHECKED	CRH 26JAN10
ONE PLACE DECIMAL ±0.020		ENG APPR.	
TWO PLACE DECIMAL ±0.010		MFG APPR.	
THREE PLACE DECIMAL ±0.005		Q.A.	
INTERPRET GEOMETRIC TOLERANCING PER:		COMMENTS:	
MATERIAL		SEE CHART	
FINISH		SEE NOTES	
DO NOT SCALE DRAWING			

KIGRE, INC.

TITLE:  
**TUBE, FILTER - 600/2**

SIZE DWG. NO. REV  
**A A3732-\_\_\_\_-\_\_\_\_ 0**

SCALE: 1:1 WEIGHT: SHEET 1 OF 1

REV	DATE	DESCRIPTION	BY	APPR
PROPRIETARY AND CONFIDENTIAL		NEXT ASSY	USED ON	
THE INFORMATION CONTAINED IN THIS DRAWING IS THE SOLE PROPERTY OF KIGRE, INC. ANY REPRODUCTION IN PART OR AS A WHOLE WITHOUT THE WRITTEN PERMISSION OF KIGRE, INC. IS PROHIBITED.		APPLICATION		

5

4

3

2

1