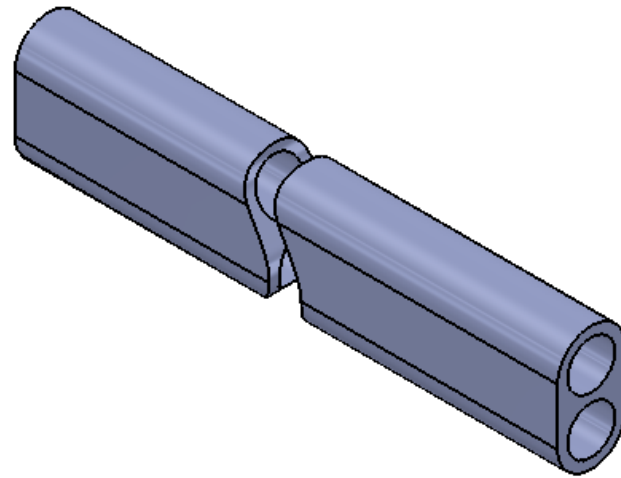


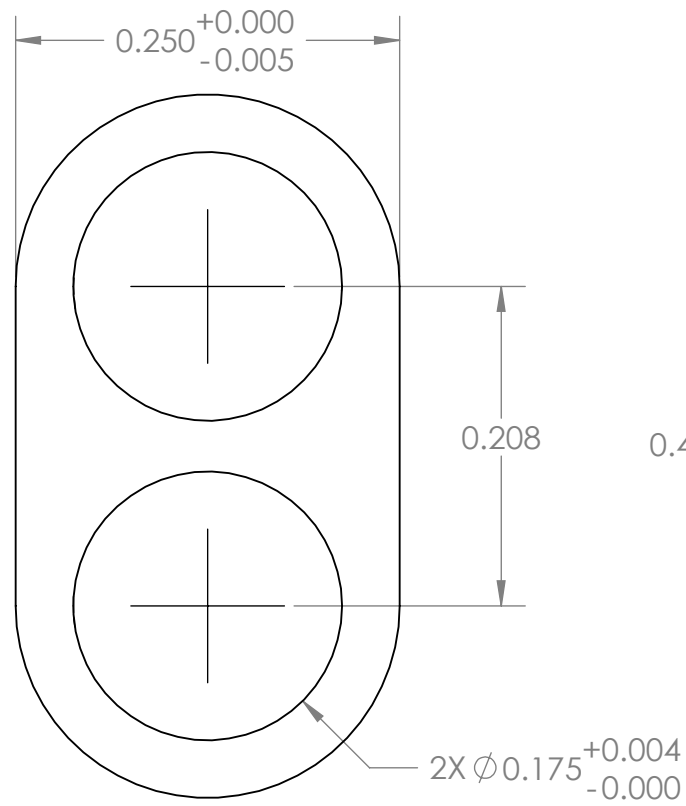
DASH NO.	GLASS	PART NUMBER	
-KK	KK1	-EXAMPLE-	
-S	KSF5	A B1020 - 269 - KK	
-SS	KSF10	REV	DRAWING NO. LENGTH MATERIAL
-K	KF2		
-C	KC331		
-Q	QUARTZ	NO	SOAK
-T	KTF2		

NO.	NOTES
1	BLANK CUT LENGTH = L + 0.5" (FOR POLISHING).
2	POLISH INSIDE AND OUT TO CLARITY, TO 80 - 50 SCRATCH - DIG.
3	ENDS-FINE GROUND.
4	0.005 MAX. X45° CHAMFER ON ALL EDGES.
5	STRENGTHEN - 3 DAY SOAK.

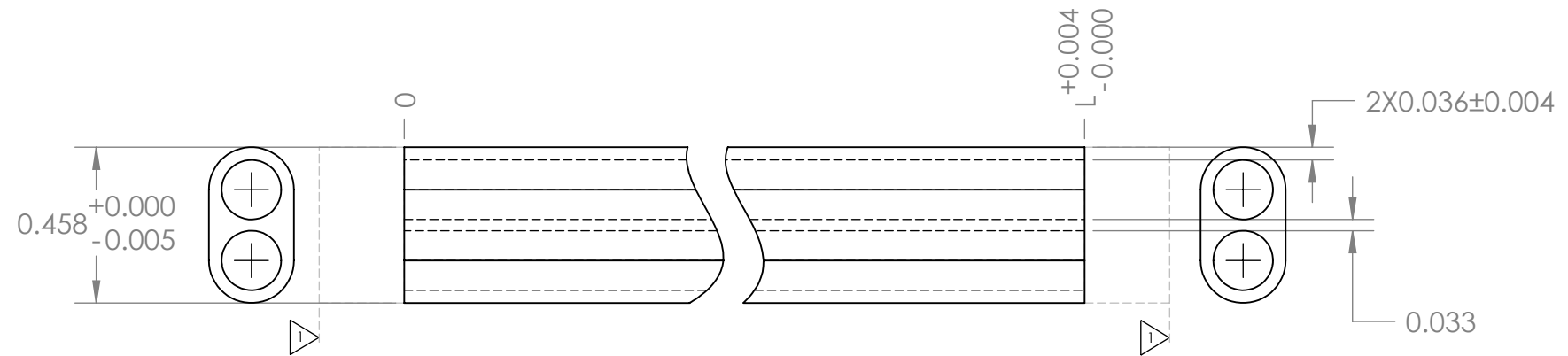


$$L = \text{_____} \begin{matrix} +0.004 \\ -0.000 \end{matrix}$$

ROD	L
M40	1.325
M50	1.690
M80	2.870



SCALE 8:1



UNLESS OTHERWISE SPECIFIED:

DIMENSIONS ARE IN INCHES (EXCEPT WHERE NOTED)  
 TOLERANCES:  
 ONE PLACE DECIMAL ±0.020  
 TWO PLACE DECIMAL ±0.010  
 THREE PLACE DECIMAL ±0.005

INTERPRET GEOMETRIC TOLERANCING PER:  
 MATERIAL SEE CHART  
 FINISH SEE NOTES  
 DO NOT SCALE DRAWING

NAME	DATE
DRAWN	CXY 31DEC09
CHECKED	CRH 31DEC09
ENG APPR.	
MFG APPR.	
Q.A.	
COMMENTS:	

**KIGRE, INC.**

TITLE:  
**TUBE, FILTER - 208/2**

SIZE	DWG. NO.	REV
B	B1020-____-____	1
SCALE: 3:1	WEIGHT:	SHEET 1 OF 1

REV	DATE	DESCRIPTION	BY	APPR
1	31DEC09	HOLE TOLERANCE CHANGED	CXY	CRH
PROPRIETARY AND CONFIDENTIAL THE INFORMATION CONTAINED IN THIS DRAWING IS THE SOLE PROPERTY OF KIGRE, INC. ANY REPRODUCTION IN PART OR AS A WHOLE WITHOUT THE WRITTEN PERMISSION OF KIGRE, INC. IS PROHIBITED.				
NEXT ASSY		USED ON		
APPLICATION				